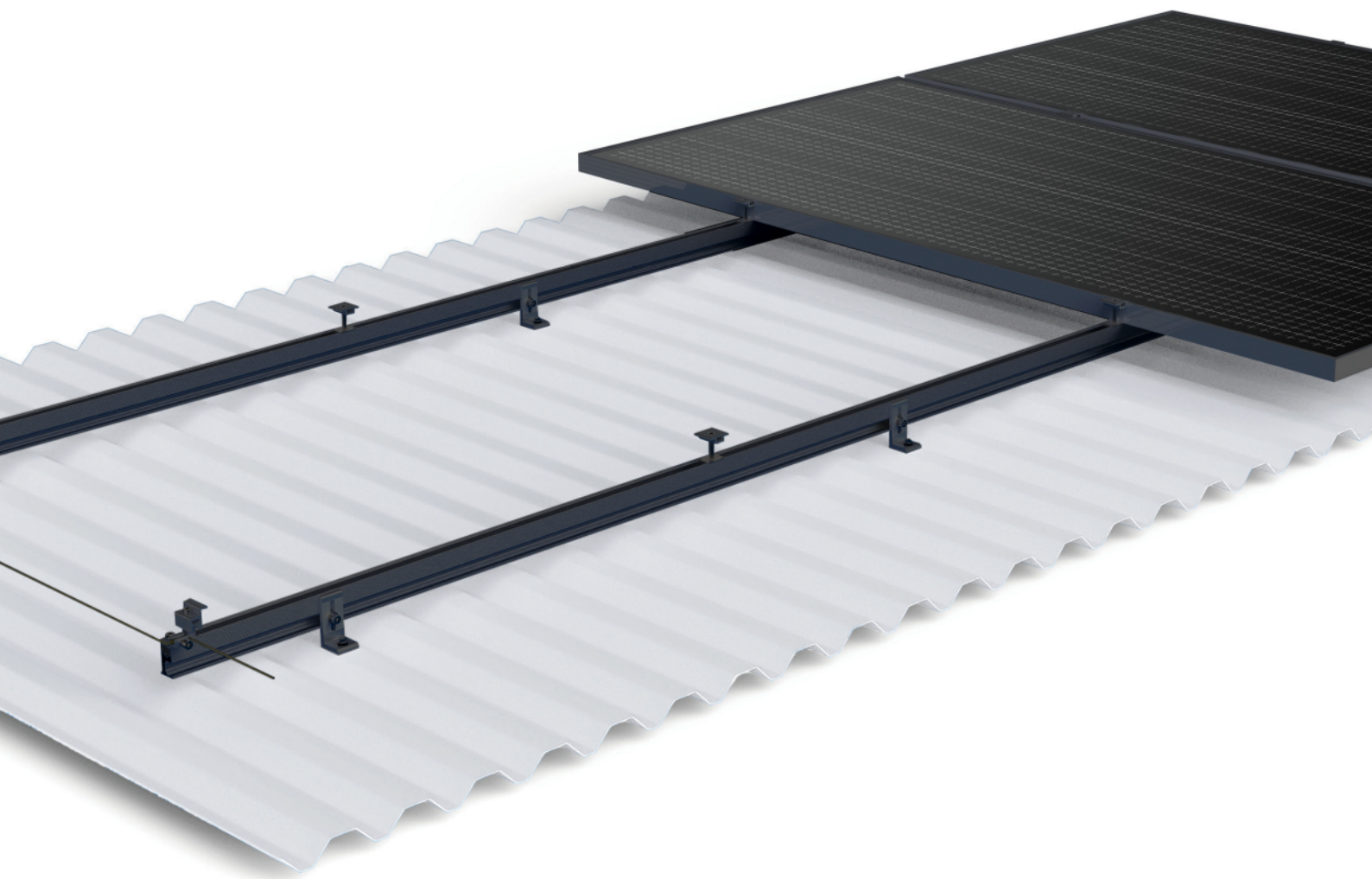


swiss solar

MOUNTING SYSTEMS



S-FIX BLACK EDITION

Brochure for S-fix
Solar Roof Mount

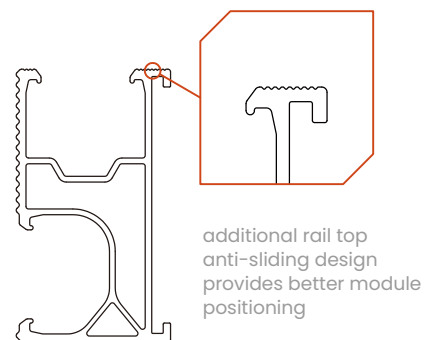
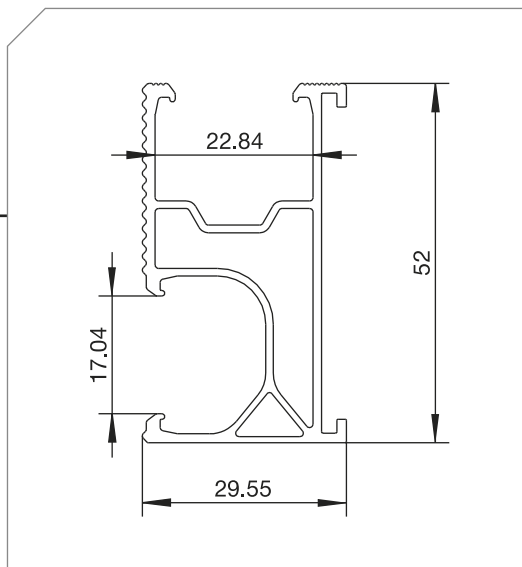
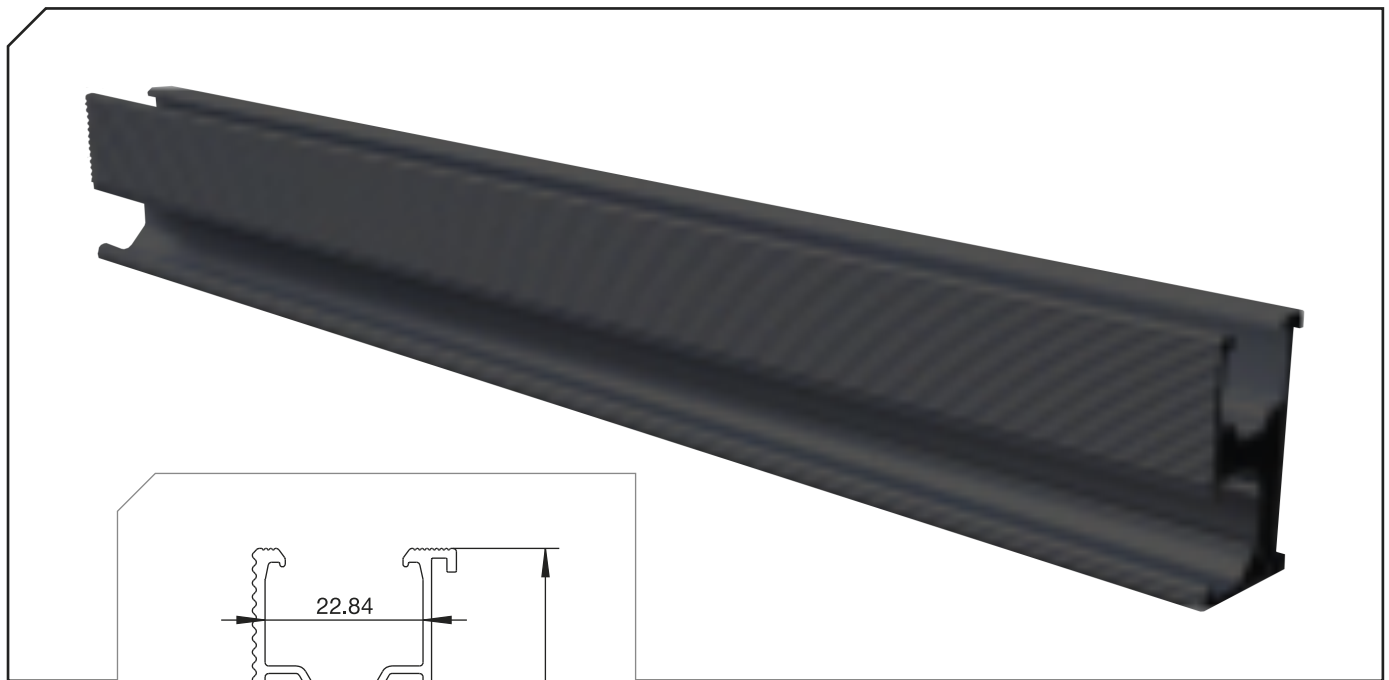
New & Improved:

The professionals choice
with superior aesthetics

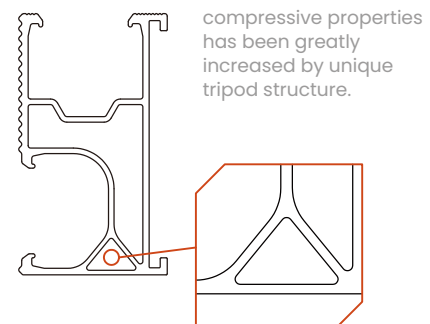


Technology comparison

Every detail of the NEW rail has been considered and fully optimized in structural properties for a better strength with less material utilization and cost.



additional rail top anti-sliding design provides better module positioning



compressive properties has been greatly increased by unique tripod structure.

Section characteristics

SECTION AREA MOMENT

$S_3 = 1851.55 \text{ mm}^3$ | $S_2 = 1174.93 \text{ mm}^3$

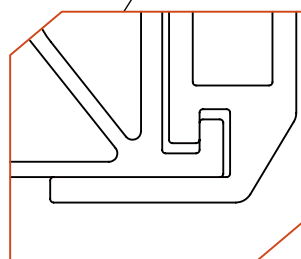
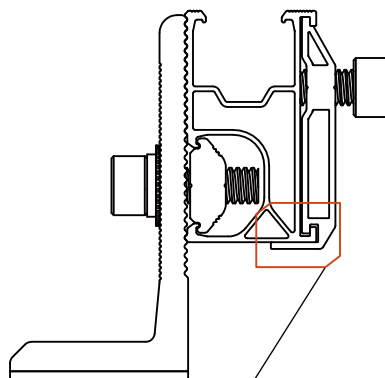
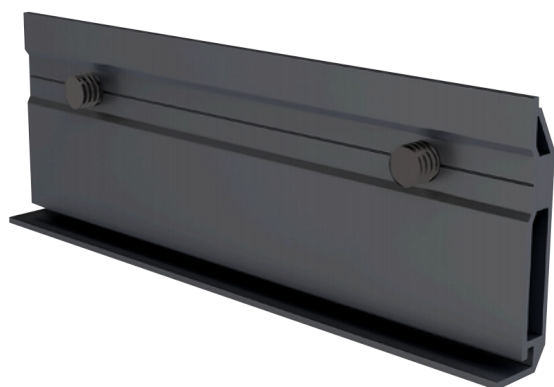
MOMENT OF INERTIA

$I_3 = 73040.08 \text{ mm}^4$ | $I_2 = 25980.17 \text{ mm}^4$

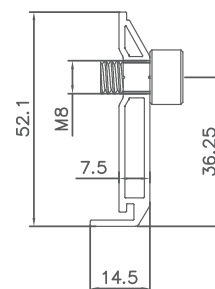
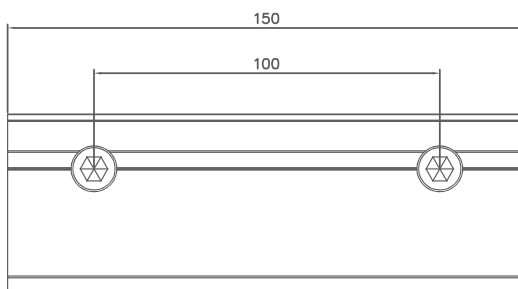
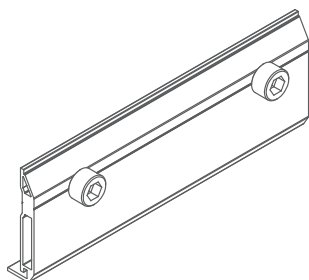
CROSS SECTION MODULUS

$W_3(\text{min}) = 2634.66 \text{ mm}^3$ | $W_2(\text{min}) = 1754.98 \text{ mm}^3$

Rail can be easily spliced and bonded together with rail splices with great strength the additional bottom supporting to two joining rails provides additional safety and strength and significantly increase the rail compressive capacity.



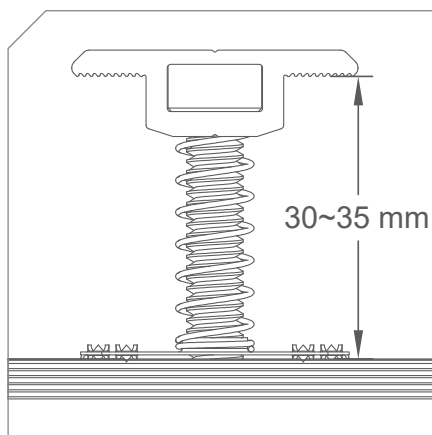
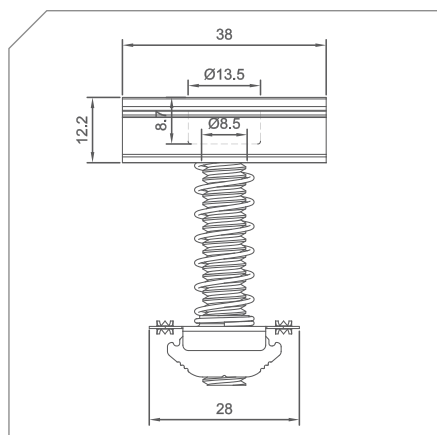
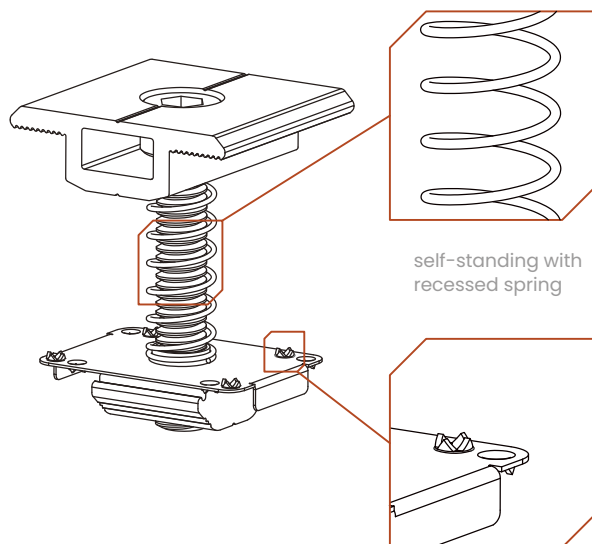
The additional bottom supporting to two joining rails provides additional safety and strength and significantly increase the rail compressive capacity.



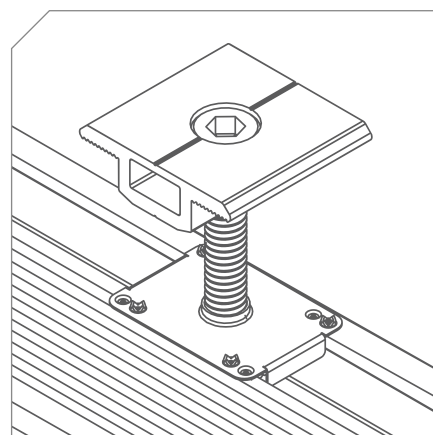
S-FIX ICK-30-35



The mid clamp is universal for 30mm-35mm module size, fully pre-assembled with grounding clip, self standing by recessed spring.



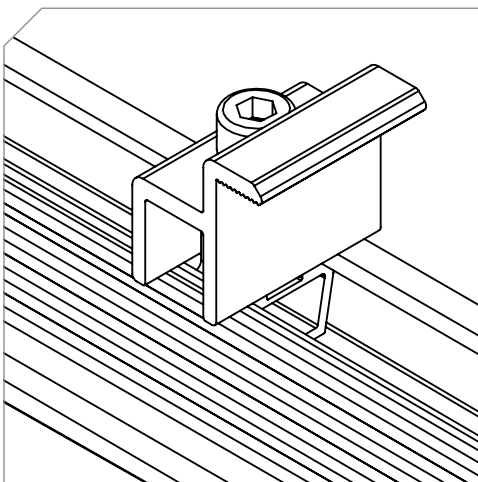
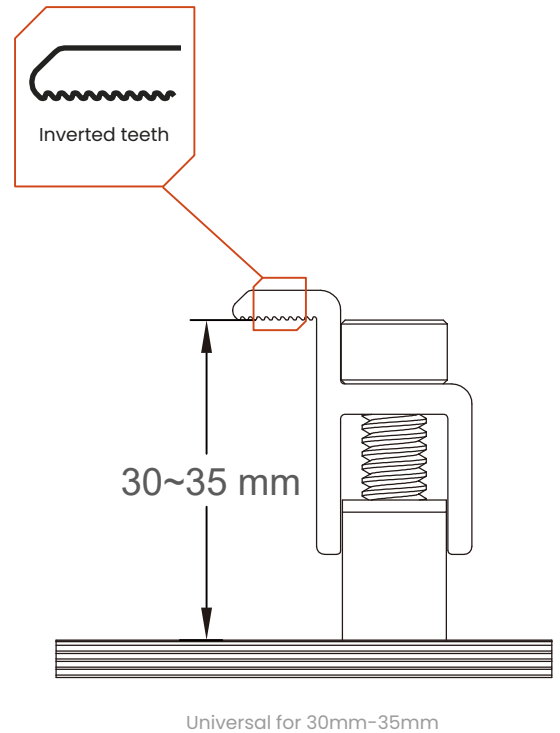
universal for 30mm-35mm

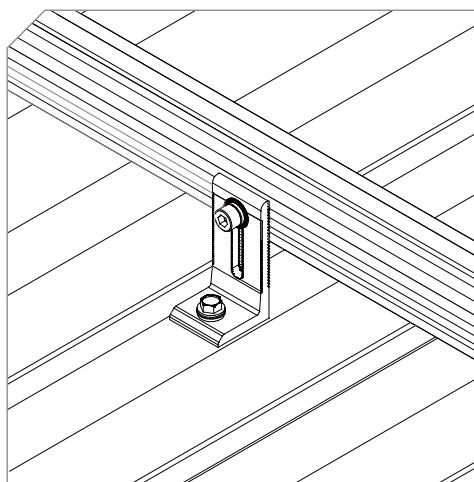
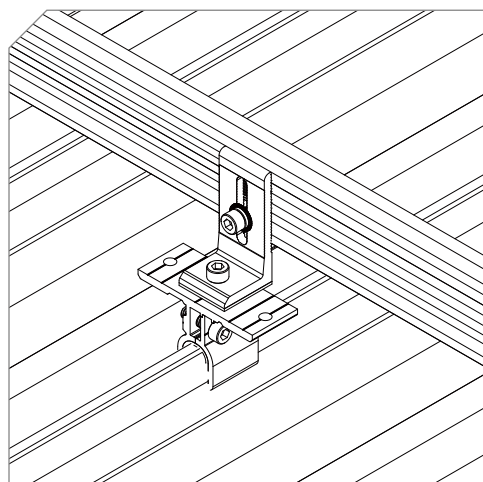
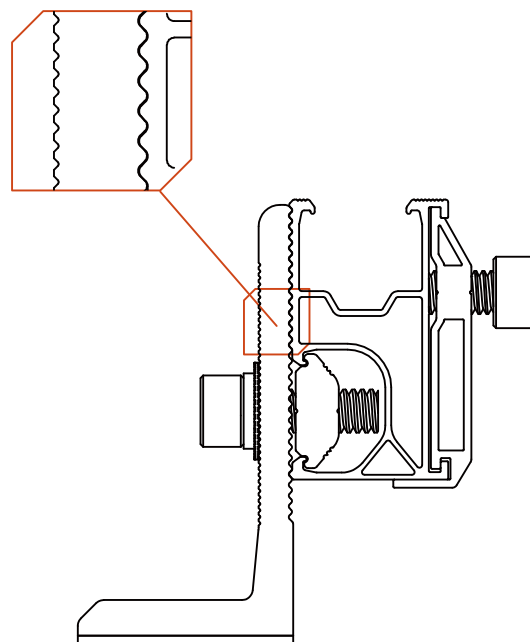


Self-standing, fully pre-assembled



The END clamp is universal for 30mm-35mm module size, fully pre-assembled.







SWISS SOLAR AG
Baarerstrasse 25 | 6300 Zug | Switzerland
info@swissenergy-solar.ch | www.swissenergy-solar.ch